



**DEEP ASSETS**  
**DEVELOPER**  
*Pvt. Ltd.*



## OUR COMPANY

We are a property developer. Our company not only take care of the comfort but also prioritize the design of every room in the apartment so that it is suitable for moments with family and guests at a rational price.

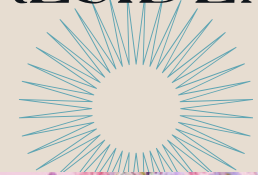


9954845859



**PROBHAT BORO PATH,  
DHIRENPARA,  
NEAR SBI**

- **BOOKING  
OPEN FOR  
2/3/4 BHK  
RESIDENCE**





## AMENITIES



CCTV  
surveillance



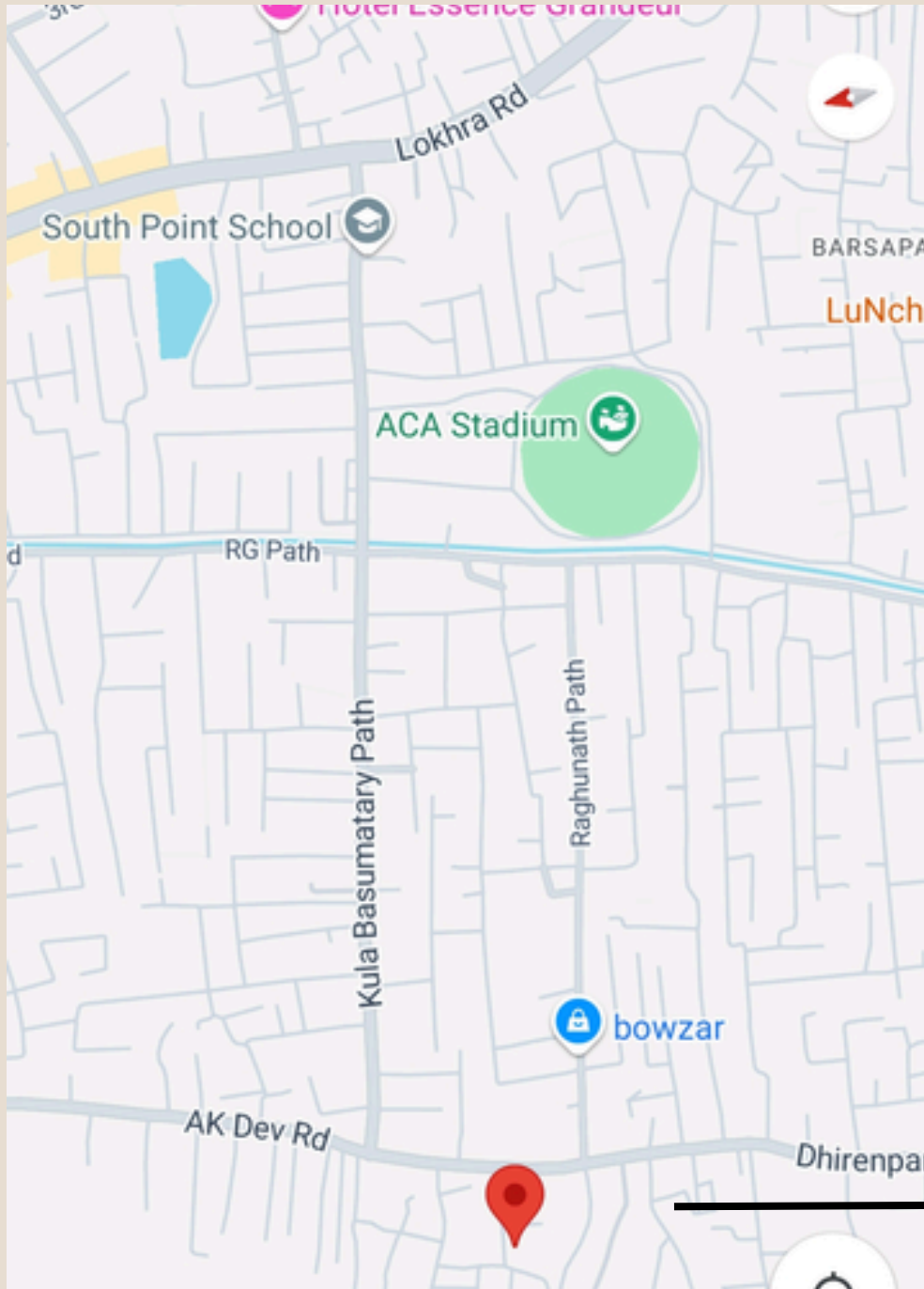
Multi-  
Purpose  
Terrace

shutterstock.com - 346638925





# SITE MAP



## Important Locations

- A.K.Dev Road-82 m
- SBI/ ATM- 210 m
- South Point School-1.3 km
- Barsapara stadium-1 km
- Hayat Hospital- 2.5 km
- ISBT- 4.3 Km
- Airport -35 min drive
- Railway station -5.0 km

## ARCHITECT/STR. DESIGNER:

ANGSHUMAN GAUTAM

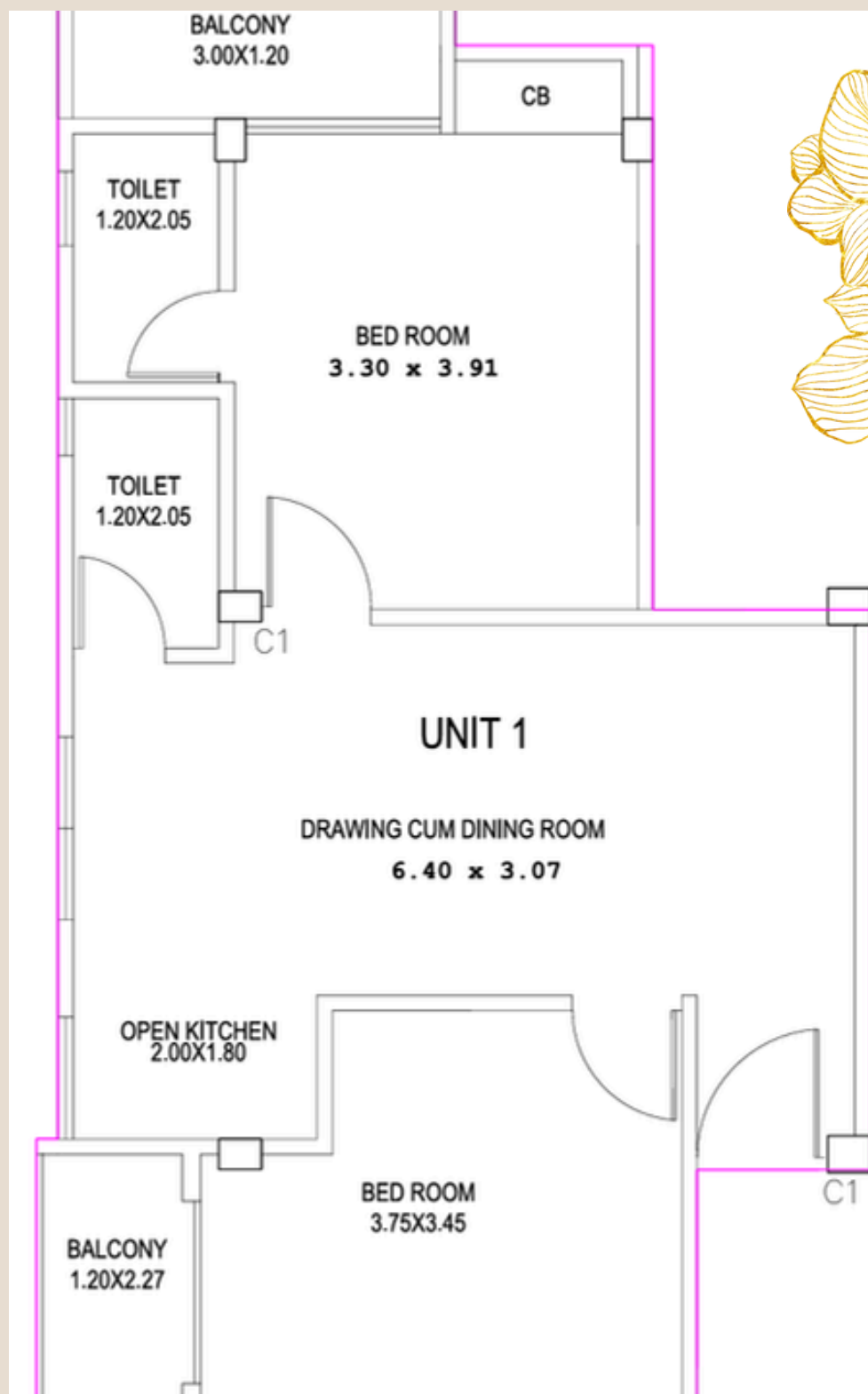
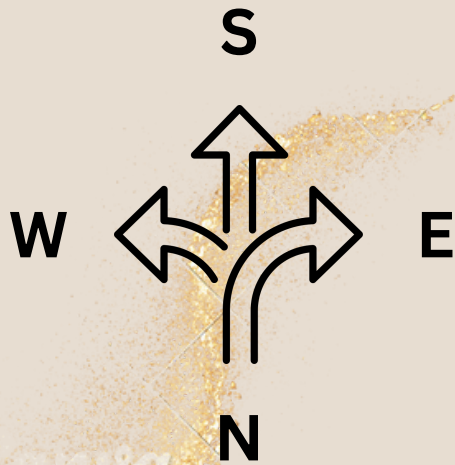
S.G PLANNING ENGINEERING AND MANAGEMENT

## PROJECT SITE

PROBHAT BORO PATH,  
DHIRENPARA,  
NEAR SBI

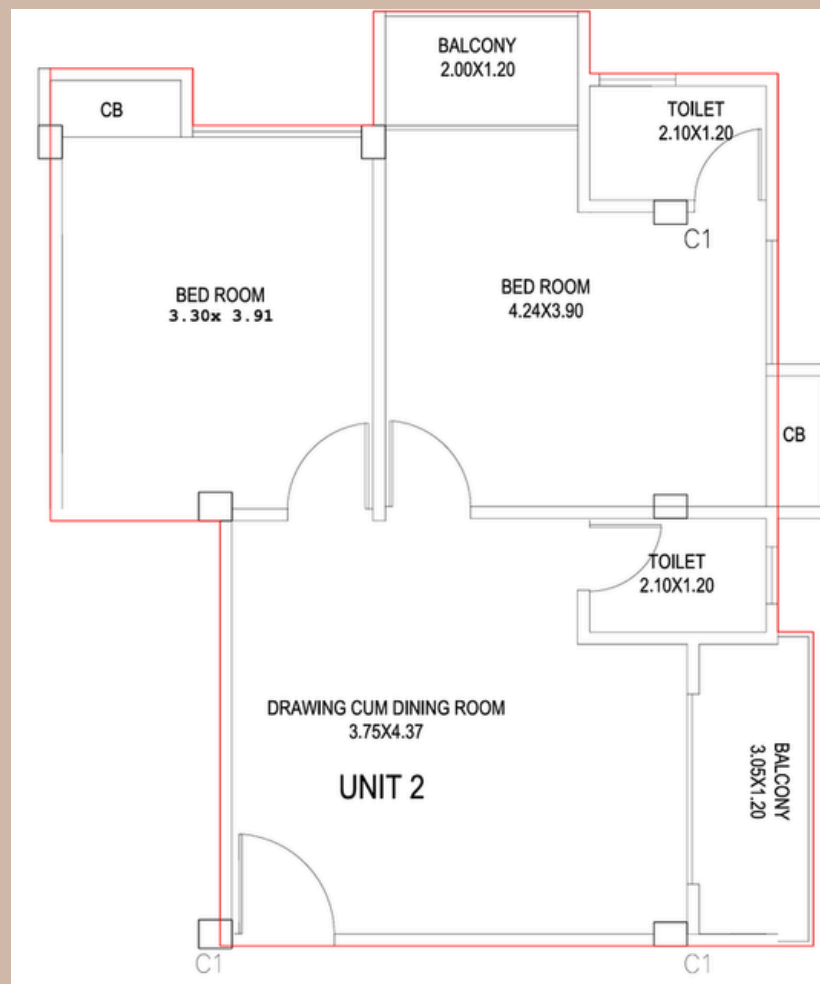
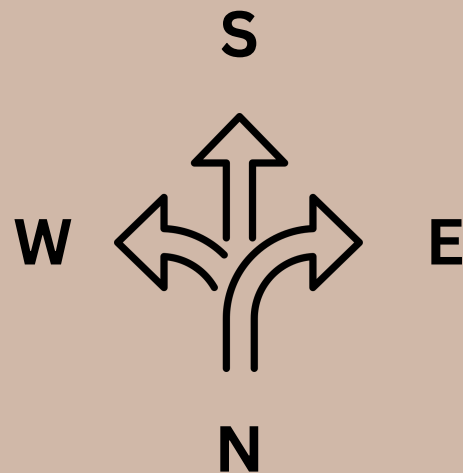
# UNIT-2

SBUA: 900 SFT



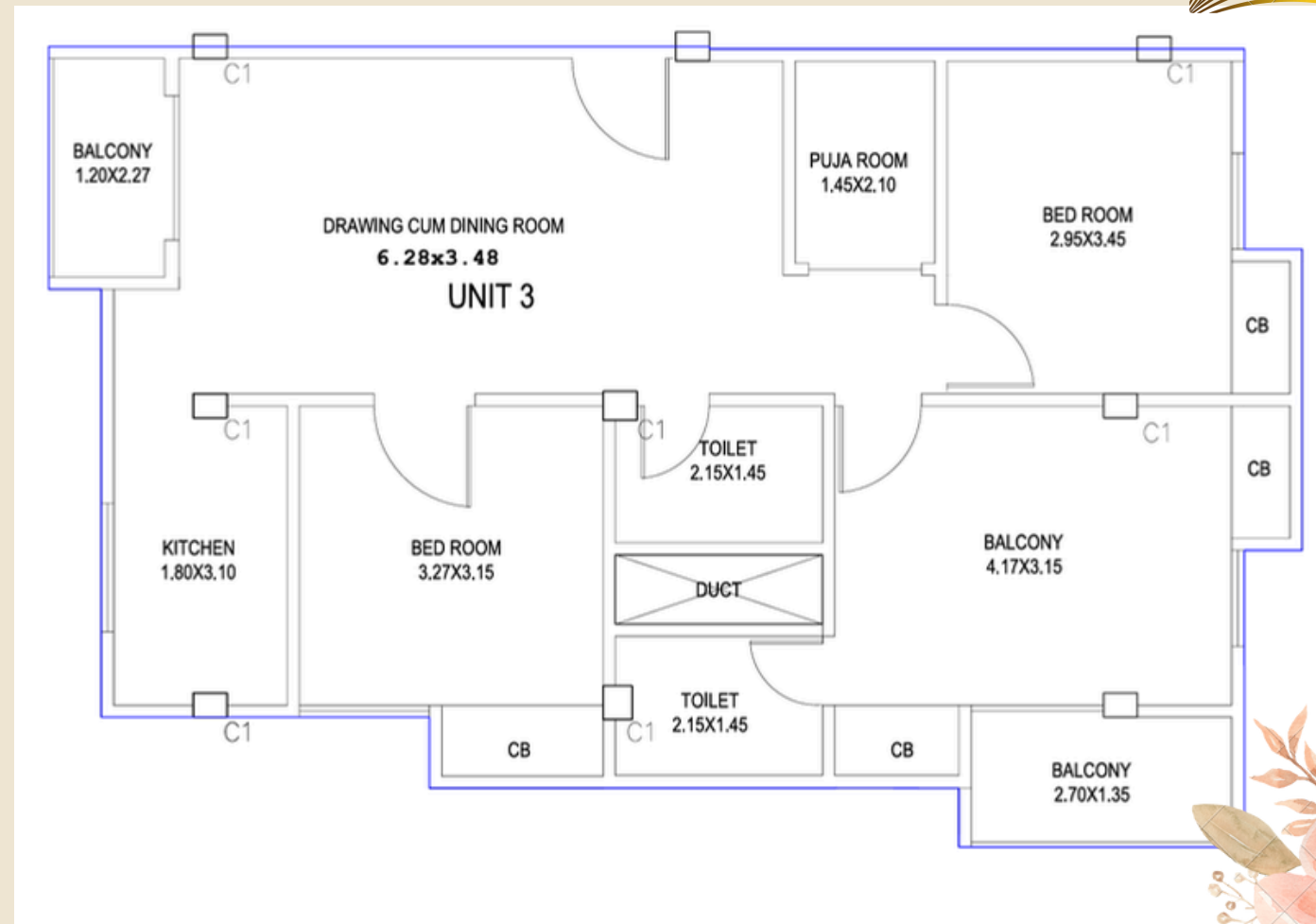
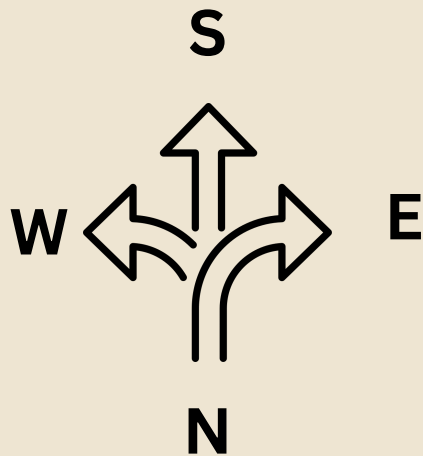
# UNIT-2

SBUA: 880 SFT



# UNIT-3

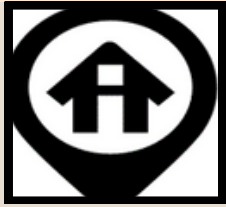
SBUA: 1250 SFT





THIS BROCHURE IS NOT A LEGAL DOCUMENT. IT DESCRIBES THE CONCEPTUAL PLAN TO CONVEY THE INTENT AND PURPOSE OF THE PROJECT. THIS IMAGES ARE IMAGINARY AND DETAILS MENTIONED IN THE BROCHURE ARE TENTATIVE AND SUBJECT TO CHANGES AT THE SOLE DISCRETION OF THE DEVELOPER AND ARCHITECT.

SPECIFICATIONS



Easy connectivity

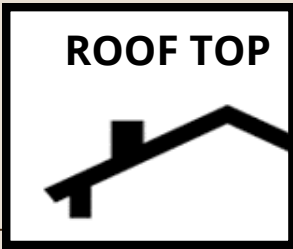


CCTV CAMERA

TOILETS:



Sanitary: (Standard CP Brass)



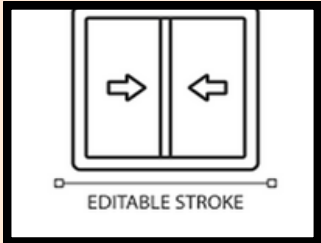
Shaded Rooftop- (Partial)



Concealed Electrical Wiring



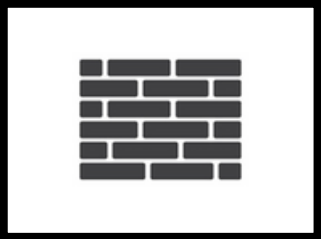
Superior front elevation with contemporary look.



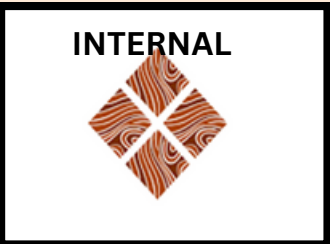
Aluminium sliding windows



Wooden flush door



Red clay brick External



Vitrified floor tiles inside the flat. Toilets wall tiles up to door height. Internal walls lumbi putty finishing.



Granatite Top cooking platform with one nos stainless steel sink and ceramic tiles about 60m above the platform with the provision of exhaust fan

